



HEYN 

ENGINEERING

CRANES | LIFTING EQUIPMENT | INSTALLS & SERVICING | SAFETY

Product Guide 2024 / 2025

Index

Cranes & Hoists	Page 4-5
Drives & Geared Motors	Page 6
Lifting & Lashing	Page 7-15
Rigging & Mooring	Page 16-18
VE Ropes	Page 19-21
Fall Protection & Access	Page 22-27
Services	Page 28
Crane Servicing & Repair	Page 29
Wire Rope Socketing	Page 29
LOLER Examinations	Page 30
Machine Moving & Factory Relocation	Page 31
Davit Socket Fitting & Testing	Page 32
Ship REpair & Management	Page 33

About Heyn Engineering
Heyn Engineering has built a strong reputation for premium quality products and excellent customer service giving our customers confidence in our ability to deliver.

Heyn Engineering provides a range of quality services to meet the demanding needs of businesses throughout Ireland. Our company is perhaps best known for the supply and maintenance of overhead cranes and under-hook lifting accessories including slings, ropes, chains, hooks, and beams. Together with more wide-reaching services, Heyn Engineering offers a comprehensive range of material handling solutions. We offer our customers an extensive service from individual assessment and design to bespoke solutions.

Providing quality solutions to the industrial, manufacturing, and warehouse sectors including individual assessment and design, installs, testing, training, and maintenance. Our team consists of highly skilled consultants and industry-qualified engineers, who receive regular product and service training and all our services are fully compliant with today's quality standards. Our engineers provide bespoke solutions which are tailored to meet individual problem-solving requirements. Indeed, when it comes to the needs of our customers we ensure our services are tailored perfectly to each project.

OUR CORE PRODUCT RANGE INCLUDES:

- Wire Ropes
- KBK and Overhead Cranes
- Safe Line Systems
- Lifting and Lashing Equipment
- Rope and Chain Hosits

I am delighted to present the 24-25 edition of the Heyn Engineering brochure.

At Heyn Engineering, our team of highly skilled professionals continues to drive the growth of our service business, offering innovative solutions tailored to our clients' needs. With an extensive range of rigging equipment and a reputation for excellence, Heyn Engineering remains Northern Ireland's trusted one-stop shop for all engineering needs. Thank you for choosing us as your partner—we look forward to supporting your success."

Kevin Denvir
Heyn Engineering



Cranes & Hoists

Heyn Engineering has represented Demag in Ireland for 40 years. During this time, the company has supplied and installed numerous overhead cranes and lightweight to various applications throughout Ireland.

Heyn Engineering offers the facility to tailor each crane around your working requirements and can provide special designs to accommodate low headroom and specific speeds. The ability to interact with surrounding cranes and machinery can also be introduced.



KBK Lightweight Cranes

A KBK Lightweight crane system is the ideal crane for load capacities up to 3,200 kg. The components of our modular system can be combined to create individual suspension monorail, suspension crane, pillar and wall-mounted slewing jib crane solutions. Thanks to the system's high flexibility, our KBK installations can be integrated easily into any production infrastructure – and modified at any time



Overhead Cranes

Universal cranes – hall cranes or overhead cranes – handle a wide range of lifting and transport tasks in production and warehouses. We build crane systems that offer you the highest level of quality, economy and reliability. Every crane component reflects our holistic expertise and reliability as a DEMAG industry partner, which has grown over decades. Our product portfolio includes crane sets and components for overhead cranes and overhead travelling cranes in single and double-girder designs as well as wall-mounted travelling cranes and gantry cranes. The Demag partner network specialises in the planning, production and assembly of cranes and also ensures their ongoing operation through a comprehensive range of services. With our assistance and comfort features, the cranes provide safety and support during operation.



Process Cranes

Process cranes are highly specialised overhead cranes designed to perform specific, repetitive tasks in industrial processes. Unlike standard overhead cranes, which are more general-purpose, process cranes are tailored to meet the demands of a particular production environment. They are commonly used in industries like steel production, paper manufacturing, power plants, and waste handling.



Chain & Rope Hoists

Rope and Chain hoists feature high handling rates, cost-effective operation, and maximum safety. As basic hoist units for integration into plant and machinery or as lifting solutions with electronic controls that are optimised for crane applications, with our wide range of rope hoists we offer the optimum solution to meet our customers' specific requirements for efficiently lifting loads weighing up to 100 tonnes.



Demag Components and Parts

Using our knowledge and extensive list of components, we can tailor to meet the specific needs of our customers. We also offer the optimum solution for your most demanding applications, regardless of whether you need radio controls or control units that always ensure excellent performance, or power supply lines that guarantee a high level of safety and reliability. And our wide range of load-handling attachments provides the right solutions for your load-handling needs.

Drives & Geared Motors



DEMAG

Demag Drives and Motors

As a leading supplier of industrial drives, we, alongside Demag can offer a wide range of products to meet your business needs- from sub-assemblies to complete systems. These include motors, gearboxes, geared motors and wheel systems. By using a modular drive systems we can provide a cost-effective solution to meet specific requirements on the basis of standardised sub-assemblies.



**SEW
EURODRIVE**

SEW Eurodrive

As the Northern Ireland agent for SEW Eurodrive, Heyn Engineering Solutions offer the full range of SEW products, including geared motors, servo motors, inverter drives and industrial gear units. All units are built to order in a modern UK production facility and special delivery arrangements are available.

Lifting & Lashing



1 - 10 Tonne Polyester Webbing Sling

Polyester webbing slings are designed to bear heavy loads and lift them safely. It is the most popular choice of material for lifting as they are resistant to oil, grease, and most acids as well as not rotating or losing strength in water. The versatility of these lifting slings means that they are used in a variety of applications including with the off-shore oil industry, cargo handling and industrial application.

Specification			
WLL	Webbing Width	Eye Length	Eye Width
1T	30mm	400mm	20mm
2T	60mm	400mm	35mm
3T	90mm	400mm	50mm
4T	120mm	450mm	65mm
5T	150mm	550mm	80mm
6T	180mm	600mm	100mm
8T	240mm	750mm	130mm
10T	300mm	1000mm	160mm



1-10 Tonne Polyester (EWL) Round Sling

Heyn stocks a wide range of Round Slings from 1000Kgs to 6000Kgs with larger sizes available on request. All slings are colour-coded to their Working Load Limit and are manufactured from durable, lightweight polyester making them easy to move and position. They cause less damage to the load than chain or wire rope slings and have various applications including logging, boat handling and construction.

Specification		
WLL	Sleeve Width	Diameter
1T	50mm	12mm
2T	50mm	18mm
3T	55mm	20mm
4T	73mm	22mm
5T	73mm	28mm
6T	76mm	30mm
8T	87mm	32mm
10T	102mm	35mm



Leno Woven Braided Sling

Very similar to the Plat Senet wire sling however its' specially designed weave allows for less spreading under load pressure keeping the individual wires that make up the sling less exposed. It is specially designed and patented to have a higher resistance to spreading and is longer lasting and harder wearing than other slings.

Each sling is made from galvanised wire rope with a construction of 7x7 or 7x19, 1960N/mm²

All slings have a 5:1 safety factor and come complete with a certificate of conformity.



Plat Senit Braided Slings

Plat Senit is an entirely handmade sling.

The lack of mechanically spliced eyes cuts out the risk of 'snagging' the sling on the item being lifted or when the lift is completed and the sling is being removed. This makes the sling much safer to work with.

Typically used on heavier lifts.

Each sling is made from galvanised wire rope with a construction of 7x7 or 7x19, 1960N/mm²

All slings have a 5:1 safety factor and come complete with a certificate of conformity.



Flat Braided Sling SWL

These are some of the most versatile and economic slings produced by in our range.

An excellent general-purpose lifting sling, it is made from 10 wires and comes with a tapered ferrule round plaited soft eyes or thimble. These are much more flexible than a single wire and provide a greater grip on the surface lift area due to its flat, rather than round, design.

Each sling is made from galvanised wire rope with a construction of 7x7 or 7x19, 1960N/mm²

All slings have a 5:1 safety factor and come complete with a certificate of conformity.



Chain Slings

Here at Heyn Engineering we stock a range of chain slings in a variety of sizes from 1.5 tonne - 17 tonne SWL (Safe Working Load) and lengths of 1 Meter - 10 Meter. Stock sized chain slings increase in lengths of 1 meter increments but can be manufactured to any specific length chosen on request. Chain slings of larger safe working loads and longer lengths can be manufactured upon request. When enquiring about chain sling we will ask you for Nominal leg length, chain length in meters, WLL, number of master links, shortening device and lower termination if required.



Stainless Steel Pump Lifting Chain

The Grade 50 316L Stainless Steel Pump Lifting Chain is a highly durable and corrosion-resistant lifting solution, crafted from marine-grade stainless steel (EN 10088/EN 10027-2/1.4404). Equipped with lifting points at each end and at approximately 1-meter intervals, it provides versatility and strength for pump lifting applications. Custom configurations, including double or triple-leg branches, are available to meet specific requirements. Each chain features full traceability, with manufacturer marks and batch numbers embossed on every 12th link, ensuring quality and authenticity. All assemblies are proof load tested to 2.4 times the working load limit (WLL) and meet a safety factor of 4:1, complete with full certification under the Machinery Directive 2006/42/EC.



DIN580 Eyebolts M6-M30

Eye Bolts, generally to DIN 580, are mechanical fasteners with threaded shafts and a ring-shaped head, and are used to attach to a structure in which the 'eye' or 'ring' can have rope, cable or shackled secured on them.

Often known as Lifting Eyebolts, these fasteners host safe working loads, with lower strength and higher strength eyebolts available for special purposes.

Low-strength eye bolts are often formed from a length of bar with the diameter of the nominal thread size, with the head bent into a ring from an unthreaded section of the bar. These eyebolts can carry axial loads well, but should not be used for off-axis loads.

High-strength eye bolts have forged heads and generally host a substantial shoulder, which enables them to support off-axis loads - which is important in applications that require multiple 'eyes'.



Omni Directional Eyebolt M8-M24

The Omni-Directional Eyebolt M8-M24 is designed for maximum flexibility and safety, featuring 360-degree rotation and a 90-degree pivot function for optimal load positioning. Each eyebolt undergoes 100% magnaflux crack detection, ensuring superior integrity and safety. Individually proof load tested to 2.5 times the working load limit (WLL), these eyebolts are certified for reliable performance. Equipped with metric-threaded bolts (ASME/ANSI B18.3.1M), this product offers versatility in lifting applications, with additional sizes and higher safe working load options available upon request.



Clevis Type Sling Hook with Safety Catch

The clevis sling hook is a general purpose hook that forms part of our chain components range. Clevis sling hooks can be fitted straight onto a chain without the need for a connector. This type of lifting equipment has a built in safety latch that prevents slipping and offers adding lifting safety, which is very important when you are lifting heavy loads. Our chain components are proof load tested for assurance. Clevis sling hooks are used in most lifting sling applications.

Stainless Hammerlock Link



The Hammerlock Links are drop forged and load rated. They are made from grade 316-NM stainless steel for maximum corrosion resistance and durability. Hammerlocks or component connectors are very strong clips designed to be used as a replacement for connecting links where high strength is required.



Eye Type Grab Hook

The eye type grab hook is a robust and versatile tool used for secure lifting and rigging applications. The hook features an eye at one end for easy attachment to chains or lifting equipment, providing a reliable connection for heavy loads. Its sturdy construction ensures dependable performance, making it essential for industrial settings where strength and durability are paramount in lifting operations.

Clevis Type Grab Hook



The clevis grab hook can be easily attached to stainless steel chain by the clevis fitting, issued with a safety cotter pin this hook can be fastened safely and can only be removed manually offering ultimate assurance for the user. Often used to shorten any length of chain allowing even the longest of chains to be adjusted to suit the needs and requirements of the user. A great hook that can be found in use on a boat anchor chain, helping to keep that anchor up and out the water temporarily if required.



Eye Type Sling Hook with Safety Catch

The eye type sling hook with safety catch is a robust and secure hardware item designed for lifting and rigging applications. The hook is equipped with an eye at one end for easy attachment to lifting equipment or chains. The safety catch enhances security by preventing accidental release of the load. This hook is ideal for industrial and marine environments where safety and reliability are paramount in lifting operations.



Vertical Plate Clamp

Vertical Lifting Clamps, also known as a standard type clamp, are designed for the vertical lifting, turning and transfer of steel plates, other sheet material or steel structure. This type of lifting equipment is suitable for use in almost all sectors of industry where the material cannot be damaged during lift or transfer. Our Vertical Lifting Clamps have an inbuilt safety device that prevents the lock from disengaging, even if the rope is slackened. Vertical Lifting Clamps are available with a load capacity of 1,000kg to 5,000kg but have been tested with 200% of capacity.

Commercial Galvanised Bow Shackle



These bow shackles are a cost effective alternative to the other shackles from our comprehensive range and are secured using a screw pin. Predominantly used in the marine and agricultural markets, these shackles are untested and manufactured from a base mild-steel material. Commercial shackles are easily identified by the pin and body material being manufactured from the same diameter steel, it is important therefore, that these shackles must not be used for safety critical or lifting applications. The bow shackle is treated with an electro-galvanised coating which has limited corrosion protection.

Alloy Bow Shackle Screw Pin



Predominantly used in the offshore, industrial and construction markets as a load rated lifting shackle, alloy steel shackles are also used in marine mooring applications. By far the most popular shackle types are the shackles with a screw pin, although safety pin versions are also available. Care needs to be taken when choosing shackles to this standard as there are many poor quality imitations currently in the market place. The faults can range from incorrect material used, lack of or incorrect heat treatment and poor manufacturing / machining processes leading to inferior quality.

Commercial Galvanised Dee Shackle



These dee shackles are a cost effective alternative to the other shackles from our comprehensive range and are secured using a screw pin. Predominantly used in the marine and agricultural markets, these shackles are untested and manufactured from a base mild-steel material. The 8mm and 10mm sizes are also a quick and efficient method for connecting and securing the straining screw to the chain in static home siting equipment. Commercial shackles are easily identified by the pin and body material being manufactured from the same diameter steel, it is important therefore, that these shackles must not be used for safety critical or lifting applications. The dee shackle is treated with an electro-galvanised coating which has limited corrosion protection.

Alloy Bow Shackle Safety Pin



Predominantly used in the offshore, industrial and construction markets as a load rated lifting shackle, alloy steel shackles are also used in marine mooring applications. By far the most popular shackle types are the shackles with a screw pin, although safety pin versions are also available. Care needs to be taken when choosing shackles to this standard as there are many poor quality imitations currently in the market place. The faults can range from incorrect material used, lack of or incorrect heat treatment and poor manufacturing / machining processes leading to inferior quality.

Long Dee Piling Shackle



Piling shackles are very much like a dee shackle though they have a much longer shank. The longer shank is needed in order to anchor to a steel piling sheet some distance down from the top, a standard shackle is not long enough. These piling shackles have a type 'A' screw pin and are manufactured from grade 4 high tensile steel with a self coloured finish as standard. The safety factor of these piling shackles is 5:1, meaning the minimum breaking load equals five times the standard working load limit for the shackle. This is the minimum load they can take before breaking may occur in the event of overloading.



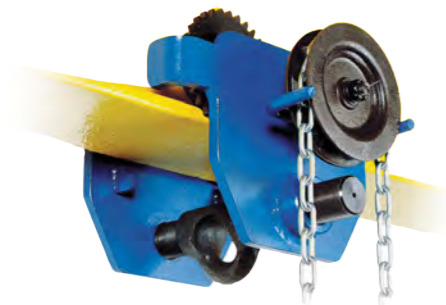
Stainless Open Hook & Eye Turnbuckle

Open Body Turnbuckle with eye hoop on one side and hook on the other. The eye and the hook have opposing threads - left hand and right hand, so that turning the body clockwise tensions it. Sizes available are : M5, M6, M8, M10, M12, M16 and M20. Perfect for corrosive environments such as coastal



Stainless Steel Open Jaw & Jaw Turnbuckle

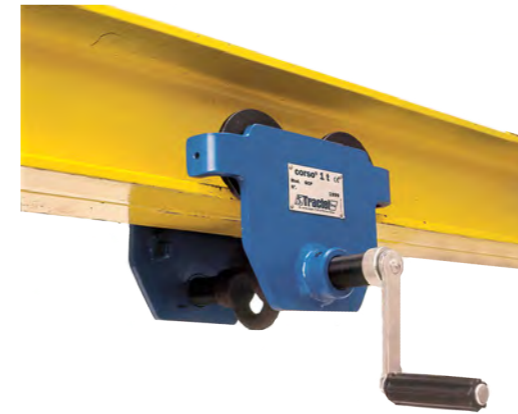
Stainless steel jaw/jaw turnbuckles, tensioners, barrel strainers, rigging screws
A4-AISI 316 stainless steel with a polished finish, these open body jaw tensioners are popular with yachting rigging or any application where you require an inline tensioner to keep your wire taught
Simply rotate the body to open or close the jaw and use the locking nuts to secure. The jaw ends come with removable clevis pins.



Corso Geared Travel Trolley

The Corso Geared Trolley allows a quick installation on a steel beam. It moves along the beam while moving the lifting device attached to it. The cat trolley opening can be adjusted to various commonly available profiles for positioning and adjustment and a lifting device can be inserted into the ring by using a hook.

Compatible hoists are as follows : Tirfor, Minifor, Tralift, Bravo and Tralift TE



Corso Push Trolley

The Corso Push Trolley allows a quick installation on a steel beam.
The Corso trolley moves on a steel beam while moving the lifting device attached to it. The trolley is moved by pushing it. The cat trolley opening can be adjusted to various commonly available profiles for positioning and adjustment. A lifting device can be inserted into the ring by using a hook.
Compatible products include hoists Tirfor, Minifor, Tralift, Bravo and Tralift TE.



PORTA-DAVIT

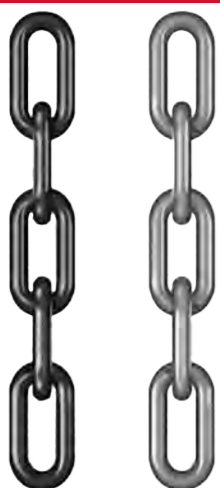
PORTADAVIT is a rapidly deployable, lightweight lifting system that offers a working load limit of up to 1000kg and can be easily rotated 360 degrees under a full load. The system can be operated by just one person and can support both goods and personnel lifting.
The PORTADAVIT is available in a range of standard configurations. It can also be customised in line with specific requirements and interchangeable components (subject to WLL rating).



PORTA-GANTRY

The top quality and highly durable PORTAGANTRY is lightweight and extremely strong. This portable lifting system can be manually assembled, using just four bolts and can safely lift to 5000kg, making it ideal for multiple applications. This system offers an overhead anchor point for multiple users for fall protection, whilst also providing great versatility for lifting materials. Our PORTAGANTRY range is highly customisable to meet your specific needs, with a variety of A-frame height configurations and beam lengths available. The PORTAGANTRY is available in a range of configurations and can be customised in line with specific requirements (subject to WLL rating).

Rigging & Mooring



6-16mm Galvanised Long Link Chain

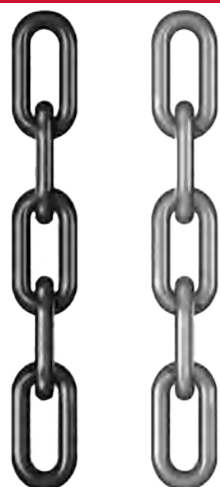
Grade 30/40 Calibrated Long Link Chain is manufactured to DIN766 and ISO4565.

Galvanised finish to ISO1461.

Supplied with Certificate of Conformity.

Bespoke lengths are available, simply contact us and a member of the team will be in touch with a quotation.

Specification			
Chain	Link Length	Link Width	Weight
6mm	42mm	25.2mm	0.63kg/mtr
8mm	52mm	33.6mm	1.1kg/mtr
10mm	65mm	42mm	1.75kg/mtr
12mm	61mm	50mm	2.15kg/mtr
16mm	100mm	67.2mm	4.45kg/mtr



6-16mm Galvanised Short Link Chain

Grade 30/40 Calibrated Short Link Chain is manufactured to DIN766 and ISO4565.

Galvanised finish to ISO1461.

Supplied with Certificate of Conformity.

Bespoke lengths are available, simply contact us and a member of the team will be in touch with a quotation.

Specification			
Chain	Link Length	Link Width	Weight
6mm	18.5mm	20.4mm	0.8kg/mtr
8mm	24mm	27.2mm	1.4kg/mtr
10mm	28mm	36mm	2.3kg/mtr
12mm	36mm	47mm	3.9kg/mtr
16mm	45mm	58mm	5.8kg/mtr



3-Strand Terylene Mooring Strops - Soft Eye & Thimble

Mooring strop allows boats to be moored to buoys. Mooring strops should be long enough so that the chain doesn't hit the boat - but no longer. High quality high spliced mooring strops available in rope diameters of 18mm-28mm.

This rope can come with an optional wear sleeve or PVC Hose. Mooring strops include soft eye on one and a galvanised thimble on the other.

Bespoke lengths, a larger/smaller eye splice are available on request as the strop can be manufactured to your requirements.

Specification				
Overall Boat Length	6-8m	8-10m	10-12m	12-14m
Displacement	1.5T	4T	8T	12T
Strop Diameter	20mm	20mm	24mm	28mm

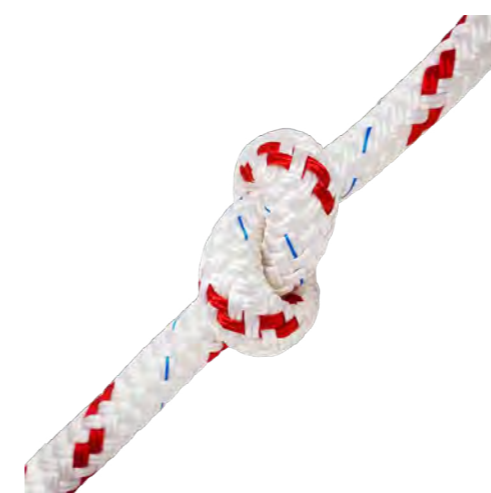


Octoplat Mooring Strops - Soft Eye & Thimble

Mooring strop allows boats to be moored to buoys. Mooring strops should be long enough so that the chain doesn't hit the boat - but no longer. High quality high spliced mooring strops available in rope diameters of 18mm-28mm, made from a strong 8 strand nylon rope which offers great shock absorption properties and is very flexible. This non-kinking octoplat rope is recommended as it can withstand the most adverse weather conditions.

This rope can come with a wear sleeve of PVC Hose, wear sleeve is shown in image above. This rope will come complete with a galvanised thimble spliced at one end.

Specification				
Overall Boat Length	6-8m	8-10m	10-12m	12-14m
Displacement	1.5T	4T	8T	12T
Strop Diameter	20mm	20mm	24mm	28mm



6-24mm Braid on Braid Polyester rope

The heat set Braid on Braid Polyester is an ideal cruising rope. It is good on the hands and easy to splice. Braid on Braid has a low stretch braided Polyester core with an abrasion resistant braided Polyester cover. After braiding, the rope is heat set under load to reduce stretch. It is ideal for sheets, halyards, control lines and many general purpose applications.

Specification					
Diameter	6mm	8mm	10mm	12mm	14mm
Min Break Strength	820kg	1300Kg	2400Kg	3200Kg	4500Kg
Diameter	16mm	18mm	20mm	24mm	
Min Break Strength	5900kg	7600kg	8900kg	10,500kg	



10-24mm Octaplait Nylon Rope

The white 8 strand rope is made from Nylon and is an ideal anchor and mooring rope. It is high strength yet flexible, splices to chain easily and coils neatly.

Specification				
Diameter	10mm	12mm	14mm	16mm
Min Break Strength	2080kg	3800Kg	4800Kg	5900Kg
Diameter	18mm	20mm	24mm	
Min Break Strength	6800kg	8400Kg	12,400kg	

2-16mm 7/19 Stainless Steel Wire Rope

Stainless steel cable & stainless wire rope is highly corrosion resistant & decorative. Excellent for marine rope rigging, stainless steel cable railing, architectural cables, cable balustrades and cable display systems. Available to purchase from 1-100m lengths, with various ends and terminations. All ropes come with an assembly fee and certificate as standard. Other lengths, higher safe working loads and bespoke options are available on request. Specialising in yachting and architectural fittings



18-22mm 6/36 Stainless Steel Wire Rope

Stainless steel cable & stainless wire rope is highly corrosion resistant & decorative. Excellent for marine rope rigging, stainless steel cable railing, architectural cables, cable balustrades and cable display systems. Available to purchase from 1-100m lengths, with various ends and terminations. All ropes come with an assembly fee and certificate as standard. Other lengths, higher safe working loads and bespoke options are available on request. Specialising in yachting and architectural fittings



Specialists in VErlope

Heyn Engineering is currently the sole distributor of VErlope special wire ropes in Northern Ireland and can supply these steel wire ropes to both Northern Ireland and Southern Ireland. With a wide range of ropes for numerous applications in the industrial sector including mobile, tower, overhead EOT, crawler, and gantry cranes Heyn Engineering can help find a wire rope to fit your requirements. We also have an elaborate range of wire ropes for port cranes, foundation & piling equipment, and offshore platforms in the oil and gas industry.



vero 4

The vero 4 is a 4-strand rotation-resistant rope with compacted strands and a high breaking strength. This wire rope is fully lubricated and made either of galvanized or optional ungalvanized wires, ideal for deck cranes and ship unloaders. The vero 4 is a robust rope construction with excellent resistance to crushing and abrasion. This product can be cut and terminated as requested by you. The vero 4 may not be used with a swivel. For further specifications and details please view the brochure [HERE](#).



veropower 8

The veropower 8 is an 8-strand, steel-plastic combination, non-rotation-resistant rope. This wire rope is fully lubricated and made both of galvanized and ungalvanized wires. The veropower 8 is in parallel lay construction with compacted outer strands and a plastic layer covering the rope core. This rope provides the highest breaking strength of all non rotation-resistant wire ropes and offers superior resistance to drum crushing. This rope can be cut to length and terminated to suit your needs. The veropower 8 may not be used with a swivel. For further specifications and details please view the brochure [HERE](#).



veropro 10

The veropro 10 is an extremely flexible wire rope with a high breaking strength and achieves excellent bending fatigue results. This 10-strand, non-rotation resistant rope with compacted strands has a plastic layer covering the rope core and can be used in various different applications. This product can be cut and terminated as requested by you. The veropro 10 should not be used with a swivel. For further specifications and details please view the brochure [HERE](#).



veropro 8

The veropro 8 is a 8-strand non rotation resistant rope with a plastic layer covering the rope core and 8 compacted outer strands. This wire rope has very high structural stability and achieves excellent bending fatigue results. The veropro 8 also has a high resistance against flattening, wear and is specially suited for multilayer spooling. This product can be cut and terminated as requested by you. The veropro 8 should not be used with a swivel. For further specifications and details please view the brochure [HERE](#).



verostar 8

The verostar 8 is a 8-strand, non-rotation resistant rope with conventional strands and a rope core covered with a plastic layer. This wire rope achieves best service life in reeving systems with single layer drums and can be used with container handling cranes, offshore cranes, harbour mobile cranes and various other lifting applications with guided loads. The verostar 8 has a high breaking strength and stable rope structure with good bending fatigue results. The verostar 8 may not be used with a swivel. For further specifications and details please view the brochure [HERE](#).



verotop

The verotop is a very flexible rotation-resistant wire rope with 16 compacted inner and outer strands offering excellent resistance to crushing and abrasion. This wire rope is a superior balanced rope when resistance to rotations most critical. The verotop can be used either with or without a swivel and is especially suited for multiple layer spooling. The verotop can be used for multiple applications including: Jib Cranes, Knuckle Boom Cranes, Tower Cranes and Drilling Rigs. This product can be cut and terminated as requested by you. For further specifications and details please view the brochure [HERE](#).



verosteel 8

This 8-strand, non-rotation resistant rope with compacted outer strands has a very flexible rope construction with high abrasion resistance offering good service life. The verosteel 8 offers best general properties at high ambient temperatures. Ideal for use in steel mills or with Ladle Cranes. The verosteel 8 may not be used with a swivel. For further specifications and details please view the brochure [HERE](#).



veropro 8 RS

With a very high breaking strength and stable rope structure the veropro 8 RS offers superior crushing resistance and resistance to abrasion. The veropro 8 RS is a rotary swaged 8-strand, non-rotation resistant rope with compacted outer strands and a rope core covered with a plastic layer. Achieving excellent bending fatigue results this wire rope also possesses excellent spooling behaviour on a multilayer drum. The veropro 8 RS may not be used with a swivel. For further specifications and details please view the brochure [HERE](#).



verotop E

The verotop E is a flexible rotation-resistant rope with compacted outer strands that combines a high breaking strength and good rotation resistance with remarkable efficiency. This wire rope can be used either with or without a swivel and has a strong resistance to drum crushing. Ideal for use with Overhead Cranes, Jib Cranes, Tower Cranes, Luffing Cranes and Truck Cranes. For further specifications and details please view the brochure [HERE](#).

Fall Protection & Access

Heyn Engineering has been supplying, installing and testing Height Safety Equipment including Fall Arrest Harnesses for a number of years. Accredited by LEEA and also with extensive training from Tractel.

Take a look at what we have to offer and contact one of the team if you'd like any further advice. To find out more about our Sizing and How to Correctly Fit a Harness you can read our article here.



Blocfor 1.8A ESD 150kg

The Blocfor 1.8A ESD Fall arrest device complies with EN 360 and is rated to CNB/11.060 for use on edges with a minimum 0.5mm curve radius.

Suitable for use on terrace roofs and can be used vertically or with a standard deviation of 20 degrees in relation to vertical. It can also be used horizontally without the use of a lanyard between the end of the strap and harness.

Available in three options
 blocfor™ 1.8A ESD M10 M47 1.8 m – webbing – M10 and M47 connector

blocfor™ 1.8A ESD M51 M47 1.8 m – webbing – M51 and M47 connector

blocfor™ 1.8A ESD M53 M47 1.8 m – webbing – M53 and M47 connector



Blocfor 20 EVO ESD 150 kg

The Blocfor 20 EVO ESD is a self-retracting fall arrest device With guaranteed 20 meters of wire rope made in: Galvanised steel, Stainless steel, Or synthetic rope. Equipped with our ESD (Extremity System Dissipator) absorption system.

Suitable for user with a weight up to 150kg That works in both vertical and horizontal (edge certification) applications. Galvanised and synthetic versions

M24 twin-lock connector on top and M47 automatic connector with integrated swivel on the absorber. Stainless steel version M10 manual connector in stainless steel on both ends. With an inline swivel on the absorber end.



Blocfor 30 ESD I 150kg

The blocfor™ 30 ESD I 150kg is an automatic fall arrester equipped with a shock-absorption system (ESD).

This ESD (Extremity System Dissipator) system ensures that the user will not be subjected to an impact of more than 600 daN even if the fall occurs when the cable is fully unwound.



blocfor™ leg bracket

Automatic fall arrester (EN360) with rope (galvanised or stainless steel), with integrated winch (EN1496). Can be easily integrated on the Tracpode, without tools. Allows to secure an operator up to 150 kg, equipped with his tools.

Integrated winch : Automatic fall protection device with integrated winch for ascending or descending during a possible rescue operation.

Shock-absorption system ESD : is also a fall indicator, eliminating the risk of using the device after a fall. It ensures that the user will not be subjected to an impact of more than 600 daN even if the fall occurs when the cable is fully unwound.



Tracpode Tripod

Temporary anchor point complying with the requirements of the EN 795 B standard designed to receive: Fall arresters complying with the requirements of the EN 360 standard Rescue lifting devices per EN 1496 A or B class Lifting anchor point complying with machinery standards 98/37/CE. Capacity 250 kg, with strap 500 kg.

Specification

	Height	Width	Weight
Minimum	1.78m	1.30m	
Maximum	2.73m	1.87m	17kg



HT22, Full body harness, Small-XL

HT22 Multiple Use Harness 1 dorsal and sternal "Forged D Clip" 5 adjustment points Sub-pelvic strap Our entry-level front and rear attachment harness Available with standard or auto buckles
Comes in 3 sizes, small, Med/Lrg and XLrg and with 2 buckle types - standard or auto buckles

HT22 R Confined Space Harness

HT22 R Harness (EN 361, EN 1497, EN 358) is a great entry level rescue harness with front and rear attachment point for rescue. This harness is equipped with an evacuation strap stitched to the shoulder straps, ensuring vertical recovery. Rated to EN 1497 Standard
Comes in 3 sizes, small, Med/Lrg and XLrg All with a standard buckle



HT34 Multiple Use Harness

Our Harness with belt is designed to comply with Standard EN 361/358, for standard use. With six adjustable points and a sub-pelvic strap, this harness offers unmatched versatility and security for your safety needs.
It comes with 1 dorsal "Forged D clip", 1 sternal anchorage 2 thoracic ones anchorage 6 adjustment points 2 lateral hitch D rings 1 Sub-pelvic strap
Comes in 3 sizes, small, Med/Lrg and XLrg and with 2 buckle types - standard or auto buckles

HT Promast Suspension Harness

This harness is designed for work on ropes during extended-duration suspended interventions. The HT Promast harness is designed to provide the user with a high degree of comfort when working in suspended positions, and thus allows extended-duration work in suspended positions.
Comes in 3 sizes, small, Med/Lrg and XLrg All with a Automatic buckles



HT43 Multiple Use Harness

Complies with Standard EN 361 1 dorsal "Forged D clip", 1 sternal 2 thoracic ones 5 adjustment points 1 Sub-pelvic strap
Comes in 3 sizes, small, Med/Lrg and XLrg and with 2 buckle types - standard or auto buckles

HT Easyclimb Harness

The HT Easyclimb™ harness is intended for fitters working on pylons and more particularly for telephone pylon fitters. Used on ladders equipped with a slider-type fall arrester on rigid support, the HT Easyclimb™ harness is the only harness on the market allowing the worker to safely use the central fastening point as an anti-turnover fall arrest point when moving up or down.
Its patented design prevents the user from turning over with the serious back injuries which could occur in the event of a fall, unlike the ventral fastening points mounted directly on the traditional safety belts.
Comes in 3 sizes, small, Med/Lrg and XLrg All with a Automatic buckles and Elastrac as standard





LDR Adjustable Lanyard M10-M51

Stranded rope with friction tensioning device. Conforms to EN 358 standard Diameter: 11mm High capacity: 150kg Connectors : M10-M51 Length : 1.5m

Karabiner Hooks

The criteria that determines the choice of connector and karabiners is :Permanent connection, screw closed Frequent connection, automatic closure with swivel ring or double action Connector opening from 17mm to100mm depending on model Light alloy or steel



Scaffold Hook

The Fall Arrest Steel Scaffold Hook is designed for use in a fall arrest system. When connected to a safety harness which is properly anchored, it will allow you to safety work from height. In the event of a fall, the fall arrest system will be able to take your weight.



Travflex 2 Lifeline

The Travflex 2 is a state-of-the-art lifeline system designed to replace the original Travflex, providing a comprehensive solution for flexible or corrugated roof installations. Its revolutionary design is CE certified to EN795-C:2012 for single-user safety and TS 16415:2013 for two or three users, ensuring unparalleled security. The system enables seamless movement along the line, allowing smooth passage over intermediate and corner anchors. Featuring dual INRS shock absorbers and collapsible end anchors, it absorbs impact forces during a fall, protecting the roof structure. Installation is user-friendly, requiring no specialized training or tools, and maintenance is straightforward with replaceable components and built-in tension indicators. The Travflex 2 guarantees a watertight seal with Tractel-approved silicon-filled rivets and neoprene strips, offering a robust, easy-to-install, and reliable safety solution for roof work.



Travsafe Lifeline

The Travsafe lifeline sets a new standard in safety with its innovative dual-cable design, making it the most efficient and sophisticated lifeline available. Engineered for ease of use, its specially designed slider glides effortlessly past intermediate cable fasteners, placed up to 15 meters apart, without the need for manual adjustment. Available in three configurations—Standard Travsafe with a stainless steel shock-absorbing ring, Travsafe with a two-material absorbing ring, and Travsafe with an INRS energy absorber—the system accommodates up to 3 to 5 users simultaneously. Designed for versatile installation, it can be mounted under ceilings, on walls, or on floors, with anchors affixed directly to the structure or to posts. Meeting the rigorous EN 795-C standard, the Travsafe lifeline combines horizontal, flexible belaying supports with advanced energy absorption to deliver unmatched safety and functionality.



Travsmart Lifeline

The Travsmart lifeline is a versatile and user-friendly safety system that complies with EN 795-C standards and supports up to five users simultaneously. Intermediate supports can be spaced up to 15 meters apart, allowing seamless movement without manual adjustments. Its flexible design enables installation on ceilings, walls, inclined surfaces, ground, or posts, offering ergonomic solutions tailored to user needs. The system allows users to work on either side without disconnecting, enhancing safety and efficiency. For fitters, Travsmart requires no special tools, eliminates the risk of cable clamp nuts loosening, and simplifies installation and maintenance, reducing downtime in the event of a fall.

Services

Heyn Engineering is perhaps best known for its expertly trained on-field engineers, assisting businesses across the Isle of Ireland, North and South. Our engineers are trained in Machine Moving, Mechanical Repairs, Machine Servicing, Installations, Ship Repairs and LOLER & PUWER Testing among other technical services



We understand that when your equipment isn't running correctly your production suffers. That is why our engineers will work within your operation schedule and time constraints to fulfil your maintenance, servicing and repair requirements on your cranes and lifting equipment.

We have a highly experienced team of engineers, electricians, riggers and technicians who are equipped to tackle any size crane or hoist repair. In the case of a breakdown or a fault occurring the Heyn Engineering team can promptly diagnose the issue, take advantage of our generous parts stock hold and repair the problem as quickly as possible.

- Crane Servicing, Installation & Repairs
- Lifting Equipment Servicing, Installation and Repairs
- Factory Relocation and Machine Moving
- LOLER testing
- Ship Management
- Socket Installations and Davit Testing
- Fabrications and Welding
- Ship Repair
- Design, Supply, Install and Testing of fall arrest, working at height, and safe line systems

Crane Servicing & Repair

While the design life of a standard crane is typically 10 years, many continue to operate beyond this timeframe. Instead of scrapping a structurally sound crane, our expert engineers conduct thorough inspections, replacing worn-out or damaged components to breathe new life into older models.



Our services cover a range of major components, such as the hoist or crab unit, cross-travel drives and wheels, long-travel drives and wheels, festoon cable systems, and control panels. Embracing modern technology, we often upgrade traditional hard-wired pendants to advanced radio remote control systems. This not only provides operators with greater flexibility but also enhances safety by eliminating the constraints of wired connections. Our experienced crane engineers and dedicated design team ensure seamless integration of modern parts with existing crane structures. All work is certified through rigorous load testing, guaranteeing the highest standards of performance and safety. Don't retire your crane prematurely – let us extend its lifespan through meticulous inspection and refurbishment.

Wire rope Socketing

At Heyn Engineering we can offer our customers a wire rope socketing service on small to large diameter ropes from 6mm up to 120mm diameters to extend the life span of your wire ropes.



VE Rope

Through Verope AG we can offer socketing end stops based on the specifications of the crane manufacturers and all wire rope socketing is carried out to DIN EN 13411-4 standards. All our Engineers are also LEEA trained. The socket fitting process can be carried out on a broad range of cranes eg. Liebherr, Terex, Bauer, Wolff Kran, Grove step by step in our workshop or on site. The process includes properly brooming and cleaning the wire rope ends then using Wirelock Resin or White Metal to attach the end sockets. We stock both open and closed Spelter Sockets and Swaged Sockets and our expertly trained engineers at short notice can re-socket Crane Ropes for the Port, Offshore, Construction, Shipping, Mining and Heavy Industry. Heyn Engineering can supply and fit end stops to all types of mobile cranes and socket both 6/36 engineering wire and anti-spin crane ropes. In addition to this we can also hand splice wire ropes on site.

LOLER Examinations

To comply with Regulation 9 of LOLER (UK) or Regulation 52 of the General Applications Regulations No. SI 299 (ROI), lifting equipment must undergo examinations (often called lifting equipment inspections or LOLER inspections) at specific intervals during its operational life

Located in Belfast, we have over 50 years of experience testing lifting equipment.

We have a team of field engineers who service the whole of Northern Ireland and we also have the ability to conduct bespoke tests here on site using specialised equipment.

Our most common tests include:

- Jack Inspection
- Tail Lift Inspection
- Crane Inspection
- Hoist Inspection
- Loose Lifting Gear Inspection
- Vehicle Lift Inspection
- Plant and Machinery Inspection



For new or moved equipment

All lifting equipment needs to be tested when it is first put into service

- When lifting equipment is put into service for the first time, a lifting equipment / LOLER examination is required. This is normally covered by the CE or UKCA and subsequent Declaration of Conformity.
- When equipment is installed or relocated and re-installed, it must undergo a lifting equipment/ LOLER examination to ensure proper installation and safe operation. For instance, with a Two Post Vehicle Lift, a competent person should oversee the installation process to ensure it meets the manufacturer's specifications. Once the installation is confirmed satisfactory, a Report of Thorough Examination after Installation should be issued. This report must be retained with the equipment throughout its service life.

What to do if equipment has been used for a period of time?

Lifting equipment must undergo a thorough lifting equipment/LOLER examination after being in service for a certain period to ensure it has not deteriorated to a dangerous level. UK and ROI legislation specifies the intervals for these examinations as follows: Lifting accessories: every 6 months Lifting equipment: every 12 months Lifting equipment used for lifting or lowering persons: every 6 months This report must be retained with the equipment throughout its service life.



Machine Moving & Factory Relocation

Machine moving and factory relocation are highly specialised activities that require a team of skilled engineers to move costly and sensitive equipment. Machine moving services range from the installation of one single piece of equipment or machinery into a local site to the international relocation of a complete factory. Whether moving machines within the same location or over a larger geographical distance Heyn's specialist team of riggers, fitters and technicians will dismantle, package, containerise, unpack and fully install the equipment in the new location as required.



We will assess and Complete a range of projects

Our Engineers have had many years of experience in Machine Moving, Machine Installations, and technical services, so you can be guaranteed a high quality, efficient and fast service to minimise the loss of essential production time in your business. A highly trained engineer will consult with you to identify the best solution and provide a fully transparent no obligation quotation for the service. An experienced team of Heyn engineers including fitters, riggers, and technicians will carry out the project. More unusual commissions for our Heyn Engineering Solutions team have been the seasonal dismantling and re-assembly of the Carrick-a-Rede Rope Bridge off the North Coast of Northern Ireland This report must be retained with the equipment throughout its service life.

Factory Relocation

Each relocation job is unique and necessitates a consultation period with one of our highly trained Engineers. This consultation will be an opportunity to discuss the most efficient methods to move the machinery or relocate the factory whilst minimising the loss of essential production time. Once all the details have been agreed upon, with fully transparent quotations and agreements, a team of experienced Heyn engineers, including riggers, fitters and technicians will dismantle, package, and containerise the equipment. Upon arrival at the new site, they will off-load, position, and fully install the equipment again. Heyn Engineering Solutions can also avail of the skills of Heyn Shipping Solutions to provide the very best, most cost-effective sea transport on flatbeds, lo-loaders or containers.



Davit Socket Fitting & Testing

Heyn Engineering Solutions has been fitting and testing socket in the UK and Ireland for over a decade. Our Expert Engineers can supply, fit and test for all applications and provide you with the certification required. Our fitting service covers all types of davit sockets.



Porta Davit

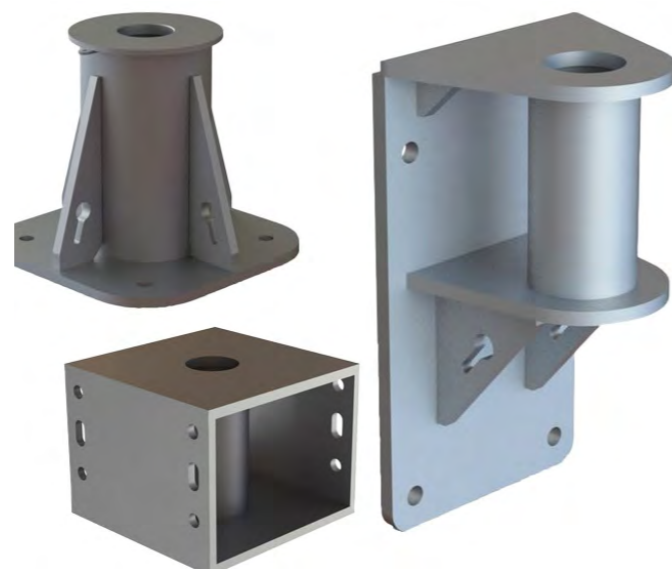
Explore top-notch socket testing services with Heyn Engineering Solutions, a trusted name with over a decade of experience in fitting and testing sockets across the UK and Ireland. Our expert engineers offer comprehensive solutions, including supply, fitting, and testing for all applications, along with the necessary certifications. Our fitting services extend to all types of davit sockets. Consider the innovative Reid Lifting PORTA-DAVIT WLL 500Kg, a lightweight (24Kg) one-person pick-up-and-go lifting solution. Supplied as a two-piece bagged Davit jib crane, it is personnel lifting rated with various height/reach configurations and can be conveniently fitted with the PORTA-BASE.

- Robust, lightweight high-tensile aluminum alloy
- Tool-free assembly
- 360° rotation under fingertip control with an internal bearing system
- WLL 500Kg goods & WLL 120Kg personnel lifting approved (EN795 Class B)
- Radius adjustment with shock load strap
- Corrosion-resistant, powder-coated finish for low maintenance

Socket Types include

We also offer bespoke and NI Water preferred davits in galvanized and aluminum, all compatible with the mentioned sockets and supplied with relevant CE and Certification documents

- Surface Mounted Socket: Standard SWL 500Kg, Suitable for floor mounting on concrete or steel floors
- Flush Mounted Socket: Standard SWL 500Kg, Suitable for flush mounting on concrete floors
- Bridge Mounted Socket: Standard SWL 500Kg, Steel construction with a galvanized finish
- Wall Mounted Socket: Standard SWL 500Kg, Suitable for mounting on concrete or steel walls or columns



Ship Repair & Management

Situated right in the Port of Belfast, Heyn Engineering is an ideal position to offer a wide range of ship management and repair services. With a specialised team on call 24/7

Ship Repair

Heyn Engineering can provide a diverse range of ship repair services. From electrical and mechanical work to ship fabrication and hydraulic installations, our expertise extends to shipwright and rigging services, ensuring the secure handling of heavy lifts, roll-on/roll-off cargoes, and containerised loads. Our comprehensive offerings also cover repairs for cargo containers, with mobile welding and compressors available for contract work or rental. Committed to safety and compliance, Heyn Engineering simplifies the management of foreign-going vessels by offering continuous guidance on safe work systems and directives to masters or crews. With round-the-clock availability, our team of Heyn Engineers stands ready to service vessels of all sizes and types in Belfast, Warrenpoint, Londonderry, or offshore at any hour. Additionally, our Safety Management System (SMS), ISPS, and quality systems have received approval from the MCA and BV through thorough audits.




Heyn Engineering has been managing vessels for nearly 200 years. At present, we are responsible for managing and maintaining the Research Vessel CORYSTES.

The RV CORYSTES

Operated under the ownership of the Agri-Food and Biosciences Institute (AFBI) at the Port of Belfast, this vessel serves as a versatile platform for conducting a broad spectrum of fisheries and marine environmental research. With year-round capabilities, it facilitates AFBI's comprehensive marine science program in the coastal waters of Northern Ireland, the Irish Sea, and nearby sea areas. Heyn Engineering is entrusted with the ship's day-to-day operations, management, and maintenance. The at-sea Heyn crew comprises 12 members, including 5 officers and 7 crew members. The vessel operates around the clock, providing routine access for the deployment and recovery of various trawl and benthic sampling gear, as well as beam trawl equipment. Utilizing advanced underwater imaging tools and state-of-the-art multi-beam acoustic equipment, the vessel enables marine habitat mapping.





HEYN

ENGINEERING

1 Corry Place
Belfast Harbour
Estate
Belfast, BT3 9AH
Northern Ireland

T: +44 (0)2890 350022
[E: Engineeringsales@heyn.co.uk](mailto:Engineeringsales@heyn.co.uk)
[E: Riggingsshop@heyn.co.uk](mailto:Riggingsshop@heyn.co.uk)
[W: heyn.co.uk](http://heyn.co.uk)